

Mega Speed[®] MS 35 K Pro

Quality Control And Product Traceability

Suitable For Line Speeds Of Up To 5000+ Pieces / Minute

Product Application

The MS35K PRO is a high-speed quality control system providing 24/7 recorded video files for traceability and for quick review when trouble-shooting line jams.

Built In high power LED lighting, simple one wire power, data and lens control plus software control for up to 8 high speed cameras.

The MS35K PRO cart is a purpose built IP67 stainless steel mobile platform featuring a lower shelf for UPS power, POE & DVR server, a middle storage shelf and convenient upper pull-out drawers.



Features

- * Gig E IP 67 cameras with built in high power LED lighting
- * 31 day recording rates of up to 1000 fps
- * Locking front door
- * Stainless steel design
- * 1 or 2 pull out drawers
- * Locking swivel castors
- * Temperature controlled
- * 30 Minute back-up UPS
- * 24" stainless steel monitor



Optional double drawers



Convenient cable management for connecting multiple cameras on each cart

One HDMI, three USB, four RJ45 camera ports and one LAN connection are available on the carts rear panel. All ports are IP 67 rated.

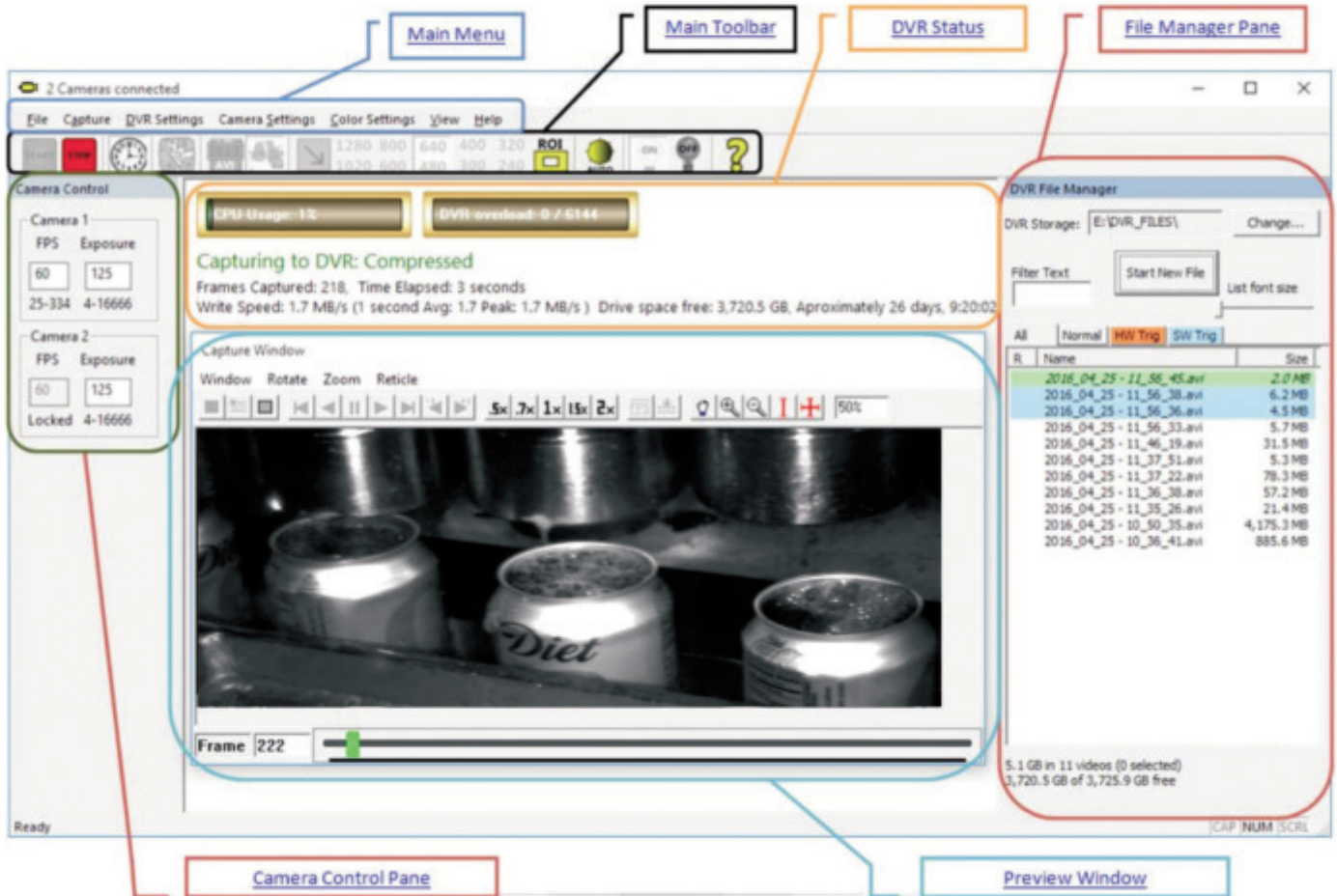


Optional Data Acquisition

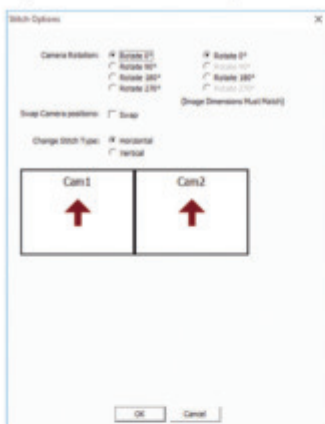
The Mega Speed MS 35K PRO camera control software is a complete software package that is included with each system. With the camera control software you can simultaneously adjust the camera settings, record the process, review the recently recorded events, edit, play back, review and transfer files without interrupting the recording process.

Mega Speed[®] MS 35 K Pro

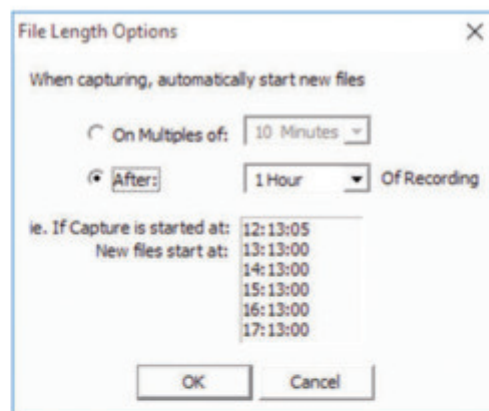
Intuitive And Easy to Understand Menu Layout



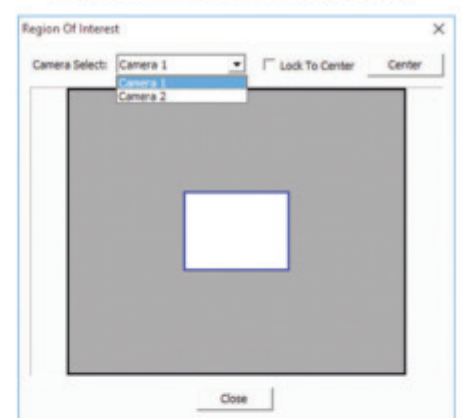
File Stitching & Rotation Options For Multiple Cameras



Flexible Recording Options



Dynamic Region Of Interest Adjustments For Easy Setup



Mega Speed[®] MS 35 K Pro



**Fully Synchronous Image Capture
For 2 or 4 Cameras When Saving
To The MS35K DVR Kart.**

**Several Focal length Lens Options
Available. Product Shown With
Optional 50mm F1.8 Lens.**

**Built In high Power Lights!
Grab and Go! Nothing Else Needed!**

Camera Specifications

Sensor type:	Color or monochrome CMOS sensor determined at time of order.
Image sizes:	User defined from software pre-sets or custom selections.
Maximum resolution:	2300 x 1700.
Minimum resolution:	64 x 2.
Maximum speed	1300 fps
Pixel size:	7 micron x 7 micron square pixel.
Shutter speed:	Global shutter 2 us to 30 ms in 1 us steps with exposure time tags.
Spectral response:	400nm to 1000nm.
ISO:	12,500 monochrome, 8,000 color.
A-D converter:	10 bit.
Trigger in requirement:	3 to 48 VDC, active high through BNC jack. Center pin positive.
Strobe out:	TTL 3.3 VDC via BNC jack. Center pin positive active high on exposure.
Trigger modes:	Software trigger or by external hardware trigger source.
Editing software:	Image analysis, data acquisition, object tracking, AVI editing & MP4 image compression.
File saving:	User can save in RAW, AVI, JPEG, BMP, TIF, PNG or MP4 format to DVR hard drive.
Control software:	Mega Speed DVR Control software
Video live-view:	Live 30 fps preview to DVR cart's 24" stainless steel monitor during set up and recording.
DVR memory	6 Tera Bytes video storage. 512 GB SSD for the DVR operating system.
Video recording:	Camera streams real time video to the DVR even while previously saved video is being reviewed.
Event tagging:	Captured video files can be sorted & marked manually or with an external hardware trigger.
Video Review:	Video review, editing and playback can be done at anytime when DVR is recording real time video.
DVR system	Windows 10
Networking:	Gigabit Ethernet cables, switches and connections are used connecting the camera to the DVR cart.
Camera cable:	Cat 6 Ethernet cable from cameras to DVR cart. 25 ft is normal length. 50 ft is optional.
Lens mount:	Standard "C" mount. "F" mount, "G" mount and electronic lens are all available as an option.
Camera size:	4.2" wide x 4.2" high x 4.2" long. ¼ x 20 tpi threaded camera mount hole
Camera weight:	2 lbs.
Camera body:	Machined anodized aluminum.
Work lights	12 built-in high power LED work lights.
Power requirements:	120 VAC for cart power. Camera power supply from cart is or 1.7 amps @ 11 - 13 V DC.
Shock Rating:	50g for 15 milli-seconds 10 times all axis. Operational vibration meets 0.25g, from 5-500Hz.